

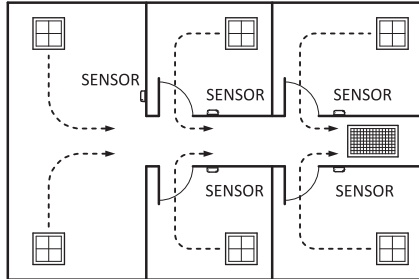
PLATINUM II

ZONE CONTROL SYSTEM

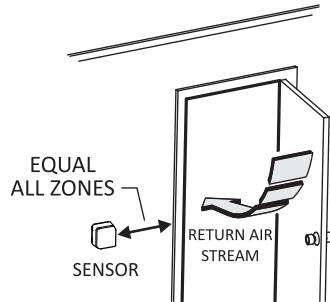
Plug-in Zone Sensor Installation Instructions

IMPORTANT: Correct positioning of the Zone Sensors is essential for the best results. It is important to understand the difference between a "Joined" Zone system and a "Separated" Zone system. With a "Joined" Zone system the return air from one room flows through an adjoining room to get back to the return air duct. Positioning the Sensors near the doorway will give a false reading in these circumstances. See the diagrams below for best performance of the system.

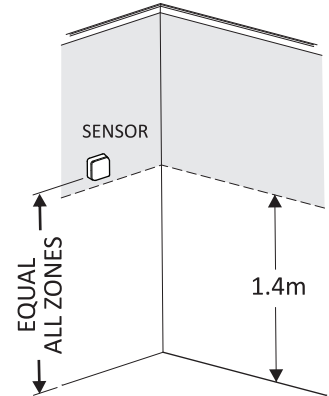
"Separated" Zones



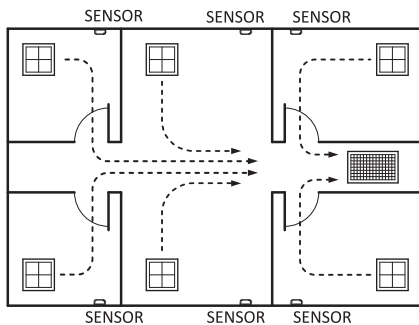
All Sensors may be installed in the return air stream, eg. near a doorway. If installing near a doorway, ensure all Sensors are in the same position relative to the doorway in each zone.



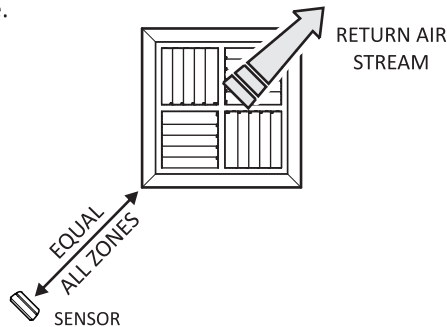
DO install all Sensors at the same level in each zone, within the shaded area.



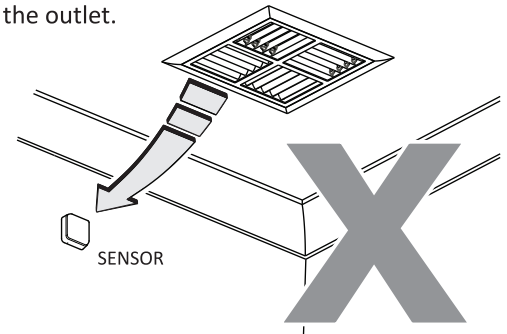
"Joined" Zones



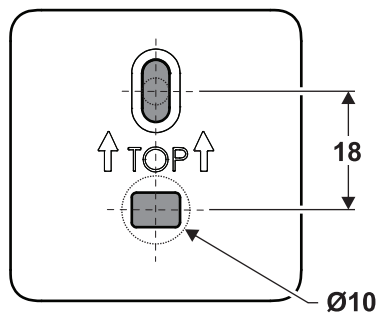
DO NOT install Sensors in return air stream. **DO** install Sensors equidistant from the outlet on the opposing side to the return air stream in each zone.



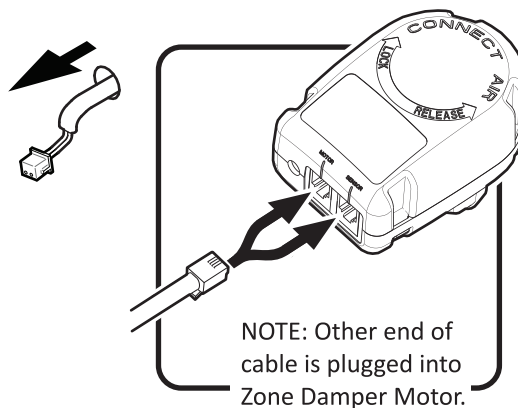
DO NOT install Sensors in the direct airflow of the outlet.



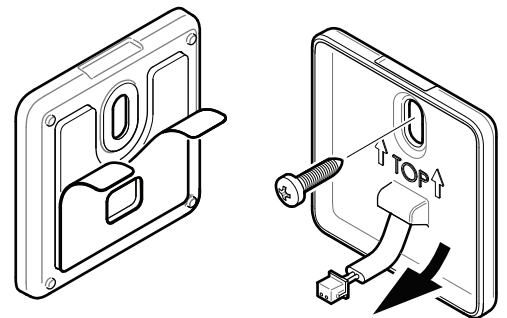
1 Determine position on wall then mark & drill hole for cable routing & wall plug (if required).



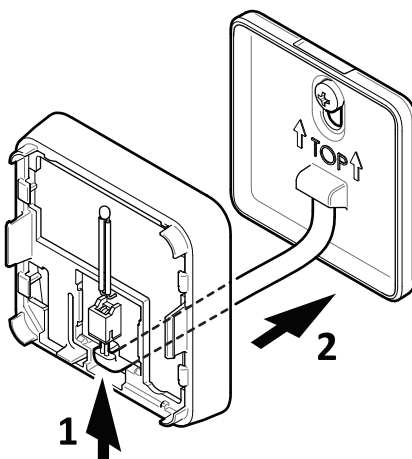
2 Feed cable through hole.



3 Remove Back Plate and peel off adhesive backing, prior to feeding cable through hole in Back Plate. Alternatively, use screw and wall plugs to fix Back Plate to the wall.



4 Plug cable into socket, carefully feed any excess cable back through hole in wall, then ensuring Insulation Foam is in place, clip Sensor assembly to the Back Plate.



5 Clip on cover to complete installation.

